

09/08/99

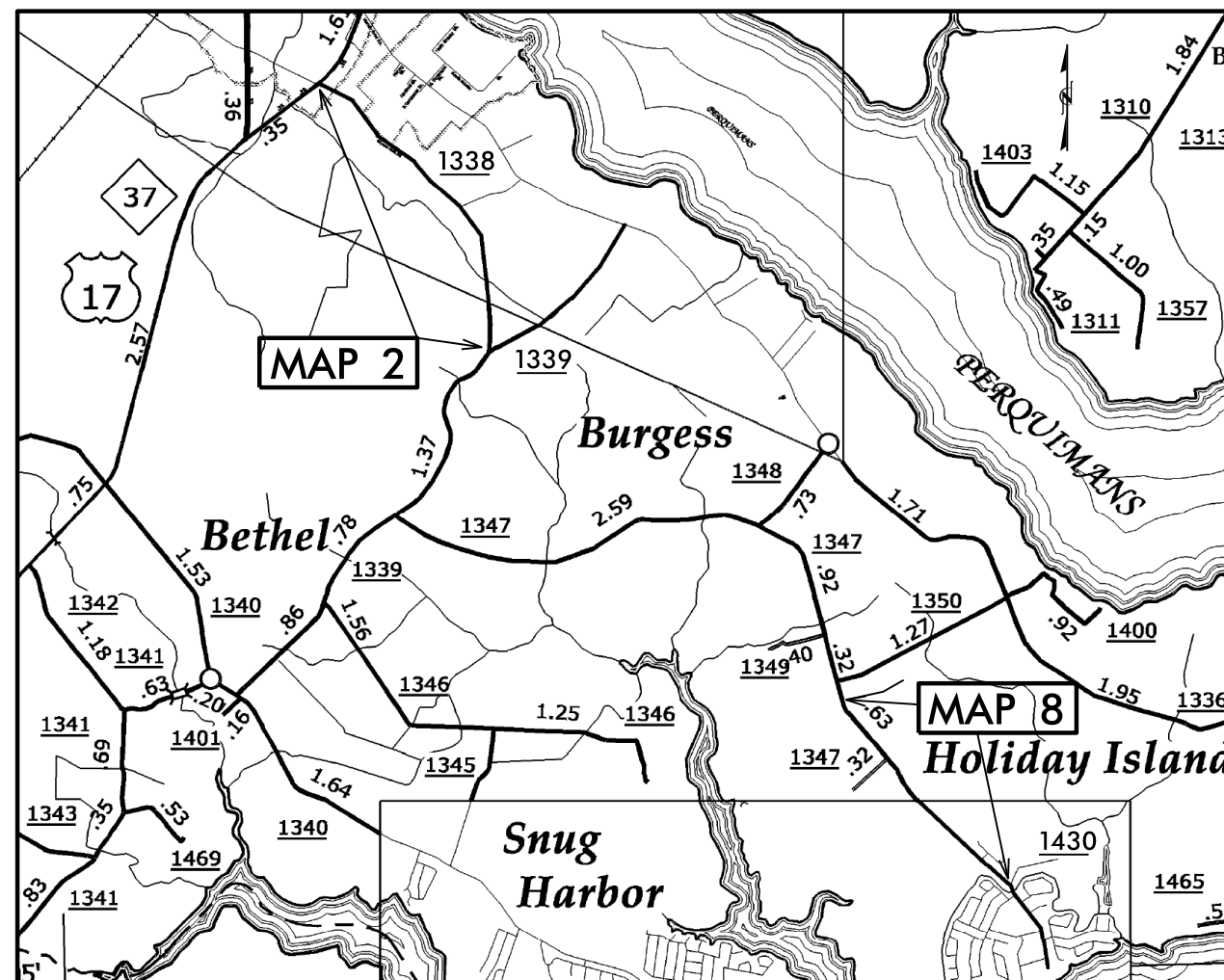
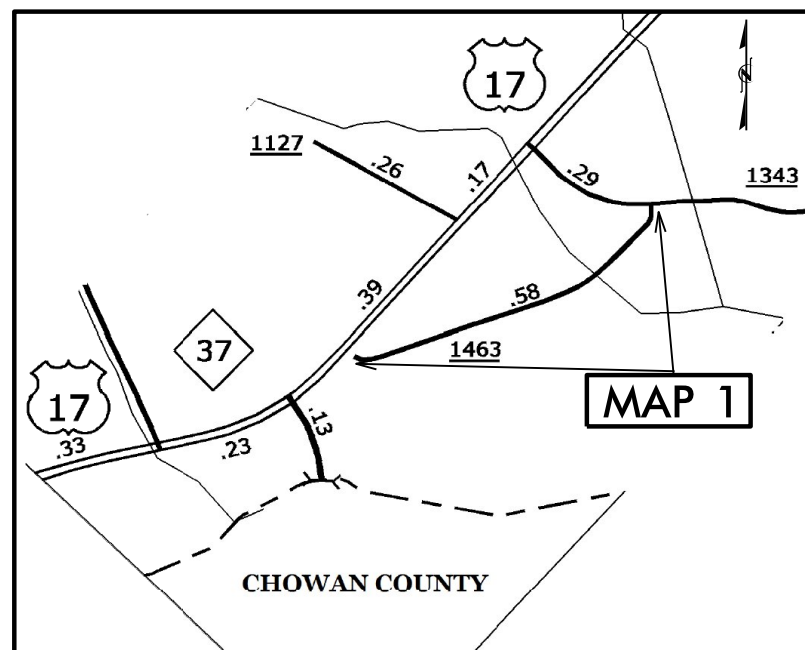
CONTRACT NO.: DA00213 WBS ELEMENT: ICR.20271.39, ETC.

STATE OF NORTH CAROLINA
DIVISION OF HIGHWAYS
PERQUIMANS COUNTY

STATE	STATE PROJECT REFERENCE NO.	SHEET NO.
N.C.	ICR.20271.39, ETC.	1
STATE PROJ. NO.	F.A. PROJ. NO.	DESCRIPTION
ICR.20271.39		MAP 1
ICR.20271.40		MAP 2
ICR.20271.46		MAP 8

LOCATION: MAP 1 SR 1463 LEVI CREECY RD. FROM SR 1343 TO DEAD END
MAP 2 SR 1338 WYNN FORK RD. FROM US 17 TO SR 1339
MAP 8 SR 1347 HOLIDAY ISLAND RD. FROM MATHEWS LN. TO SR 1430

TYPE OF WORK: RESURFACING



NTS

PROJECT LENGTH

LENGTH OF ROADWAY PROJECT MAP 1 = 0.58 MI.
LENGTH OF ROADWAY PROJECT MAP 2 = 2.30 MI.
LENGTH OF ROADWAY PROJECT MAP 8 = 1.34 MI.

Prepared in the Office of:
DIVISION OF HIGHWAYS

113 Airport Dr., Edenton NC, 27932

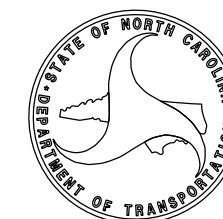
2012 STANDARD SPECIFICATIONS

LETTING DATE:

W. B. HOBBS, P.E.
DIVISION PROJECT MANAGER

C. E. SLACHTA
DIVISION PROPOSALS ENGINEER

DIVISION OF HIGHWAYS
STATE OF NORTH CAROLINA



DRAWN BY: BMB

09/08/99

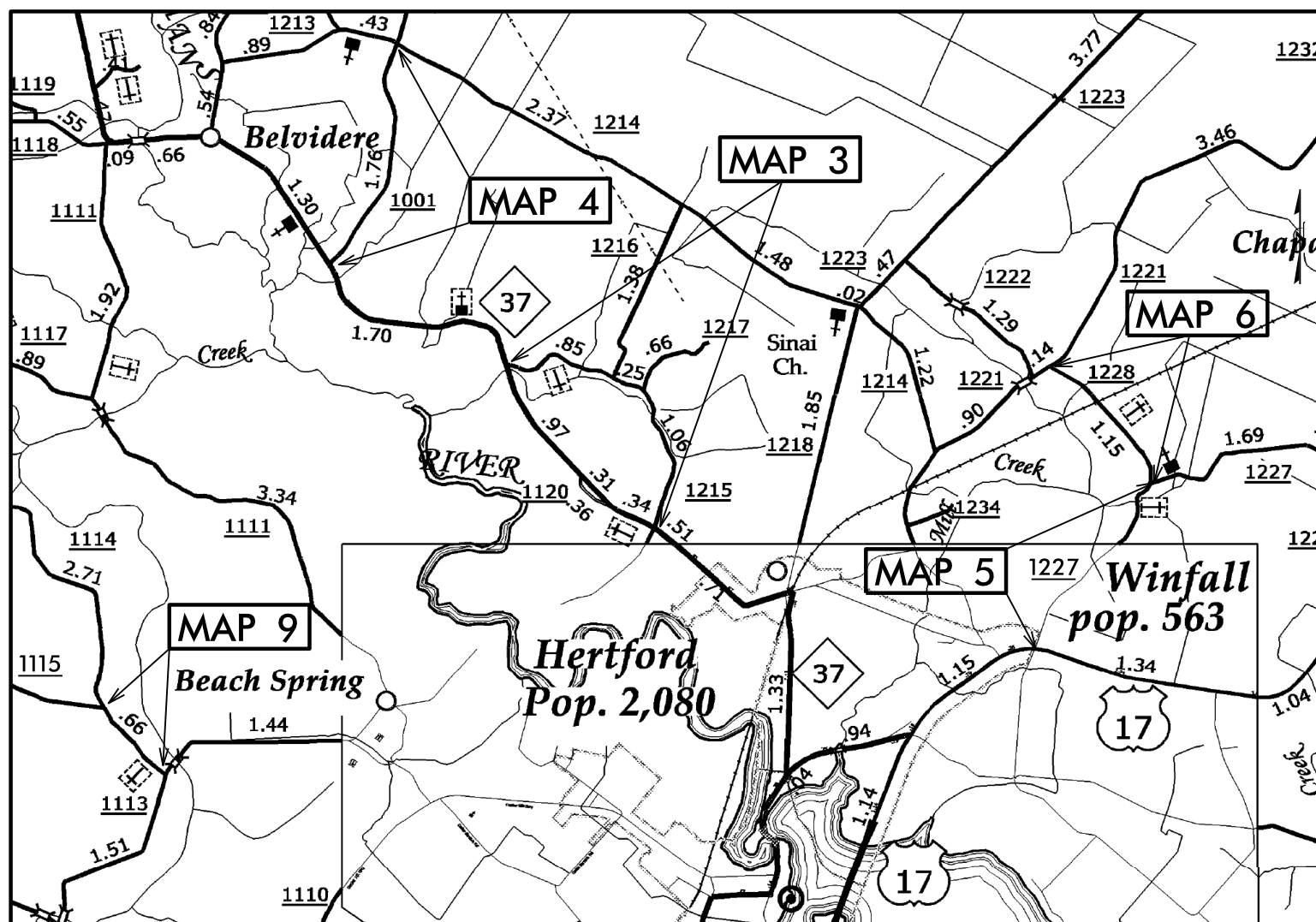
CONTRACT NO.: DA00213 WBS ELEMENT: ICR.20271.39, ETC.

STATE OF NORTH CAROLINA
DIVISION OF HIGHWAYS

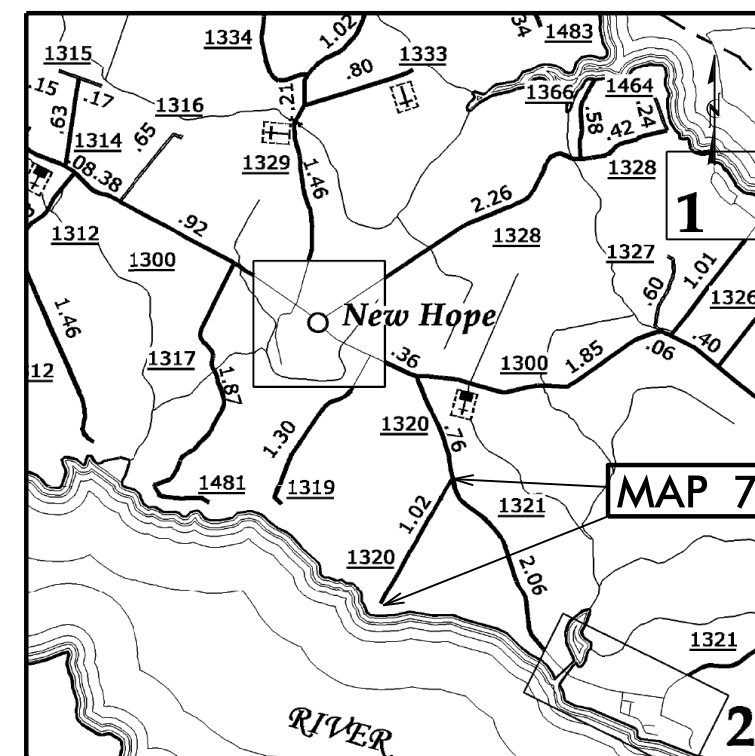
PERQUIMANS COUNTY

**LOCATION: MAP 3 SR 1215 BAGLEY SWAMP RD. FROM SR NC 37 TO NC 37
MAP 4 SR 1001 SANDY CROSS RD. FROM SR 1213 TO NC 37
MAP 5 SR 1227 SWING GATE RD. FROM US 17 TO SR 1228
MAP 6 SR 1228 SWING GATE RD. FROM SR 1227 TO SR 1221
MAP 7 SR 1320 SUEOLA BEACH RD. FROM SR 1321 TO DEAD END
MAP 9 SR 1114 CHINQUAPIN RD. FROM SR 1113 TO SR 1115**

STATE	STATE PROJECT REFERENCE NO.	SHEET NO.	TOTAL SHEETS
N.C.	ICR.20271.39, ETC.	2	
STATE PROJ. NO.	F.A. PROJ. NO.	DESCRIPTION	
ICR.20271.41		MAP 3	
ICR.20271.42		MAP 4	
ICR.20271.43		MAP 5	
ICR.20271.44		MAP 6	
ICR.20271.45		MAP 7	
ICR.20271.47		MAP 9	



TYPE OF WORK: RESURFACING



NTS

PROJECT LENGTH

- LENGTH OF ROADWAY PROJECT MAP 3 = 2.15 MI.
- LENGTH OF ROADWAY PROJECT MAP 4 = 1.80 MI.
- LENGTH OF ROADWAY PROJECT MAP 5 = 1.52 MI.
- LENGTH OF ROADWAY PROJECT MAP 6 = 1.15 MI.
- LENGTH OF ROADWAY PROJECT MAP 7 = 1.02 MI.
- LENGTH OF ROADWAY PROJECT MAP 9 = 0.66 MI.

Prepared in the Office of:
DIVISION OF HIGHWAYS

113 Airport Dr., Edenton NC, 27932

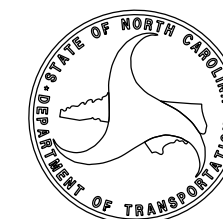
2012 STANDARD SPECIFICATIONS

LETTING DATE:

W. B. HOBBS, P.E.
DIVISION PROJECT MANAGER

C. E. SLACHTA
DIVISION PROPOSALS ENGINEER

**DIVISION OF HIGHWAYS
STATE OF NORTH CAROLINA**



DRAWN BY: BMB

C O N T R A C T P A V E M E N T S C H E D U L E

C1	PROP. APPROX. 1½" ASPHALT CONCRETE SURFACE COURSE, TYPE SF9.5A, AT AN AVERAGE RATE OF 165 LBS. PER SQ. YD.
U	EXISTING PAVEMENT

P A V E M E N T S C H E D U L E

C1	PROP. APPROX. 1½" ASPHALT CONCRETE SURFACE COURSE, TYPE SF9.5A, AT AN AVERAGE RATE OF 165 LBS. PER SQ. YD.
U	EXISTING PAVEMENT.

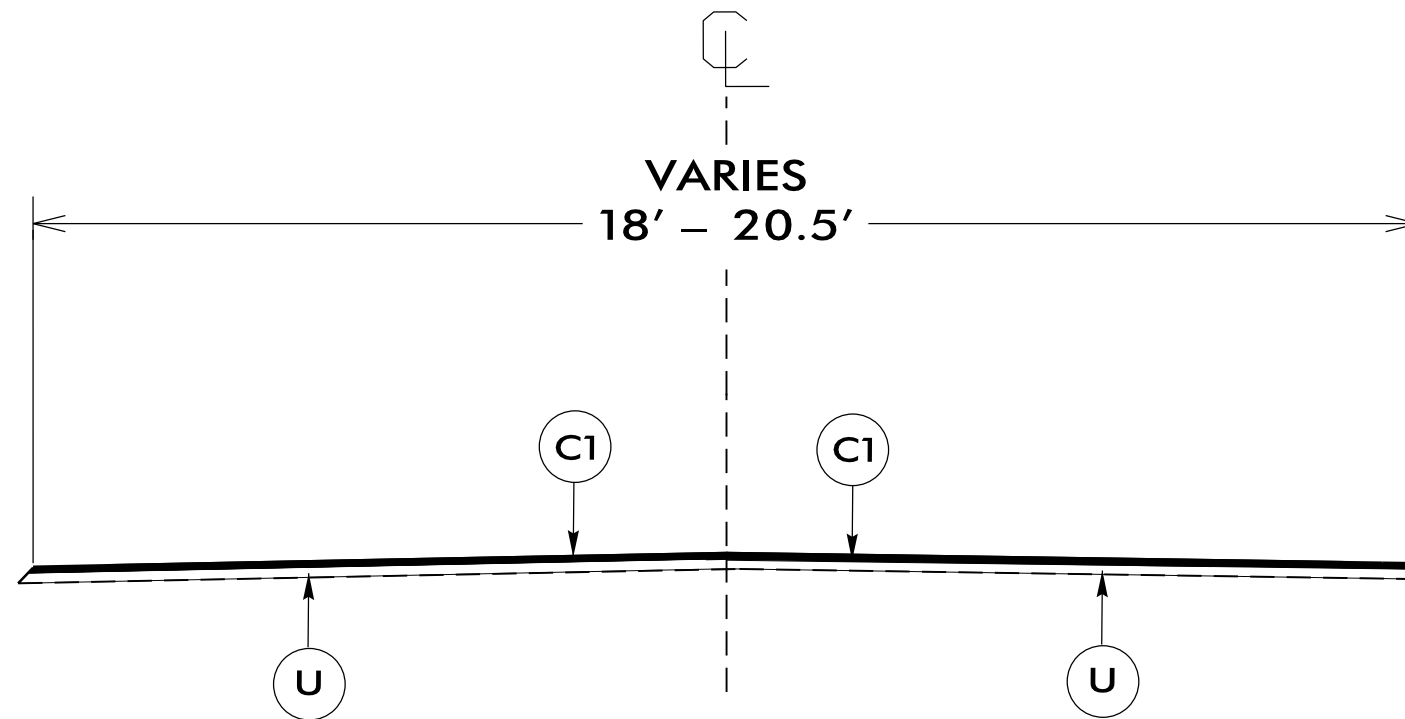
PROJECT REFERENCE NO.	SHEET NO.
1CR.20721.39, ETC.	4

NOTES:

*ALL PAVED S.R. ROADS TO BE RESURFACED TO THE ENDS OF THE RADII, OR AS DIRECTED BY THE ENGINEER

*EDGES, PAVEMENT WIDENING, INTERSECTIONS, AND BRIDGE FLARES ARE INCLUDED IN THE TABLE OF QUANTITIES

*SHOULDERS TO BE RECONSTRUCTED BY OTHERS

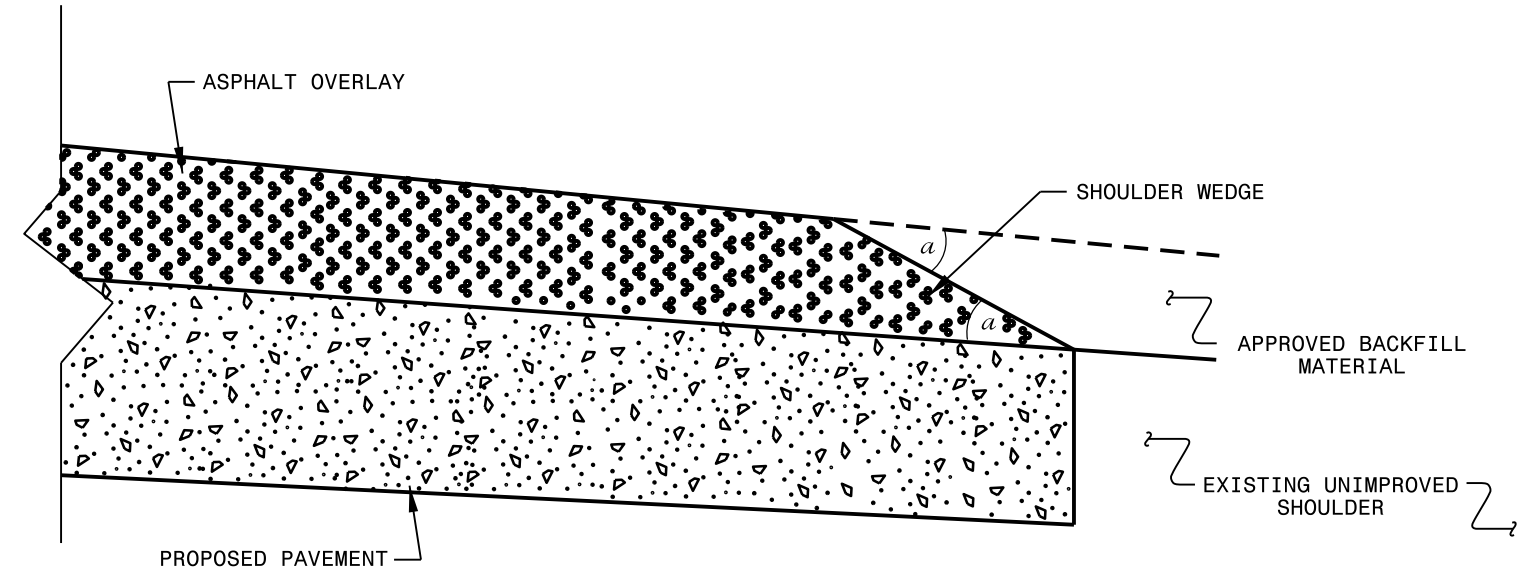


TYPICAL SECTION NO.1

USE WITH MAPS 1-9

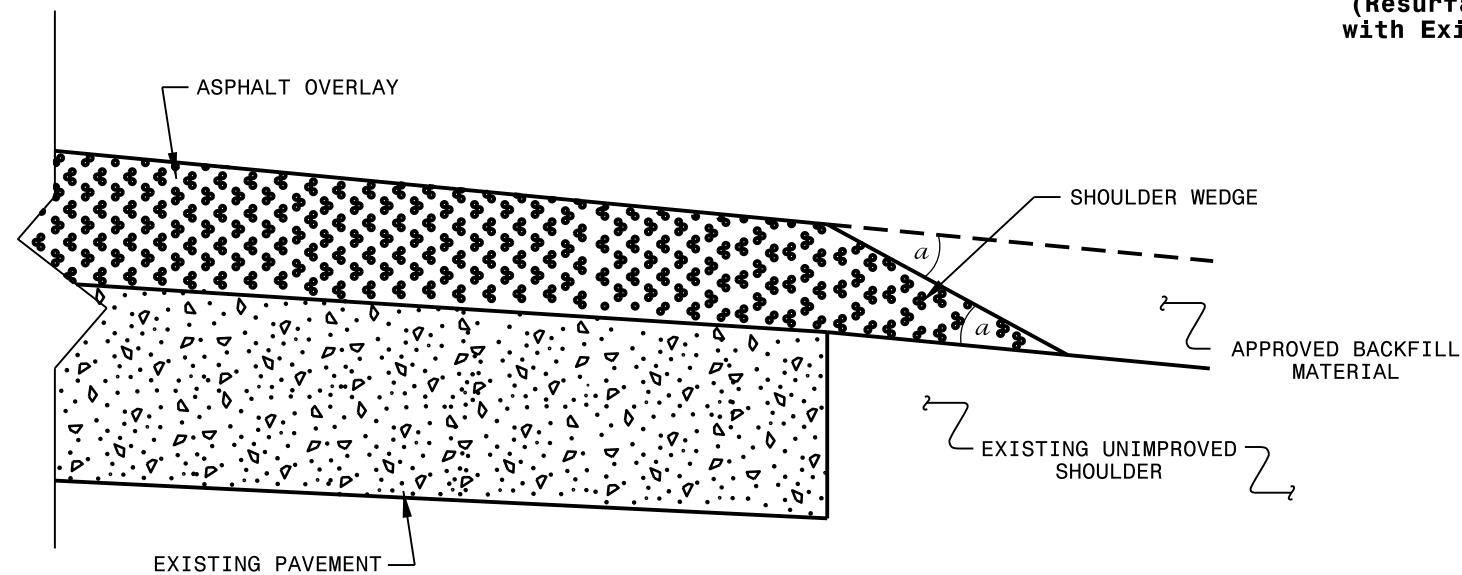
NTS

I:\SEP-2014\15105
 E:\District1\Planning_Maps\2014\Perquimans\Plans\PER02014.dgn
 11/11/2014 10:53:31 AM



SHOULDER WEDGE DETAIL

(Resurfacing Projects w/ Widening or
with Existing Paved Shoulder > 2 ft.)



SHOULDER WEDGE DETAIL

(Resurfacing Projects w/ NO Widening)

NOTES:

- 1) DETAIL DOES NOT APPLY TO OGAFB AND ULTRA-THIN BONDED WEARING COURSE.
- 2) BACKFILL SHOULDER WITH APPROVED MATERIAL.
- 3) THE SHOULDER WEDGE DEVICE MAY BE DISENGAGED AT PAVED DRIVEWAYS AND SIDE STREETS.

a - SHOULDER WEDGE ANGLE = 30°

CONTRACT STANDARDS AND DEVELOPMENT UNIT	
Office 919-707-6950	FAX 919-250-4119
SHOULDER WEDGE DETAILS	
ORIGINAL BY: T.SPELL	DATE: 7-19-11
MODIFIED BY:	DATE: 10/16/12
CHECKED BY:	DATE:
FILE SPEC.: s:\usr\details\stand\shoulderwedgedetail.dgn	

PROJECT NO.	SHEET NO.	TOTAL NO.
1CR.20721.39, ETC.	6	6

SUMMARY OF QUANTITIES

PROJECT NO	COUNTY	MAP NO	ROUTE	DESCRIPTION	TYP NO	LANES	LANE TYPE	FINAL SURFACE TESTING REQUIRED	WARM MIX ASPHALT REQUIRED	LENGTH MI	WIDTH FT	MOBILIZATION LS	INCIDENTAL STONE BASE TONS	SURFACE COURSE, SF9.5A TONS	ASPHALT BINDER FOR PLANT MIX TONS	TEMPORARY TRAFFIC CONTROL LS
1CR.20721.39	Perquimans	1	SR 1463	FROM SR 1343 TO DEAD END	1	2	2WU	NO	NO	0.58	18	1	15	529	35	1
1CR.20721.40	Perquimans	2	SR 1338	US 17 TO SR 1339	1	2	2WU	NO	NO	2.30	18.5	*	40	2,219	149	*
1CR.20721.41	Perquimans	3	SR 1215	NC 37 TO NC 37	1	2	2WU	NO	NO	2.15	19.5	*	50	2,122	142	*
1CR.20721.42	Perquimans	4	SR 1001	FROM SR 1213 TO NC 37	1	2	2WU	NO	NO	1.80	18	*	20	1,737	116	*
1CR.20721.43	Perquimans	5	SR 1227	FROM US 17 TO SR 1228	1	2	2WU	NO	NO	1.52	18	*	20	1,467	98	*
1CR.20721.44	Perquimans	6	SR 1228	FROM 1227 TO SR1221	1	2	2WU	NO	NO	1.15	18	*	20	1,110	74	*
1CR.20721.45	Perquimans	7	SR1320	FROM SR 1321 TO DEAD END	1	2	2WU	NO	NO	1.02	20	*	10	1,034	69	*
1CR.20721.46	Perquimans	8	SR 1347	FROM MATTHEWS LANE TO SR1430	1	2	2WU	NO	NO	1.34	20.5	*	20	1,348	90	*
1CR.20721.47	Perquimans	9	SR 1114	FROM SR 1113 TO SR 1115	1	2	2WU	NO	NO	0.66	18	*	10	637	43	*
GRAND TOTAL										12.52		1	205	12,203	816	1